



# The IB MYP - DP 1 Bridge Course



# Contents

S.No	Topics	Page No.
1	<b><u>Introduction</u></b>	3-4
2	<b><u>Our Approach</u></b>	5
3	<b><u>Our Proven T.E.S.T Methodology.</u></b>	6
3	<b><u>Timeline</u></b>	7-8
4	<b><u>Course structure</u></b>	9-10
5	<b><u>Our teachers</u></b>	11-12
6	<b><u>Subjects</u></b> <b><u>Language &amp; Literature</u></b> <ul style="list-style-type: none"> <li>• English A</li> </ul> <b><u>Individuals &amp; Societies</u></b> <ul style="list-style-type: none"> <li>• Business Management</li> <li>• Economics</li> <li>• Psychology</li> <li>• History</li> <li>• Global Politics</li> </ul> <b><u>Sciences</u></b> <ul style="list-style-type: none"> <li>• Physics</li> <li>• Chemistry</li> <li>• Biology</li> <li>• Environmental Sciences</li> <li>• Computer Sciences</li> </ul> <b><u>Mathematics</u></b> <ul style="list-style-type: none"> <li>• Applications and Interpretations</li> <li>• Analysis and Approach</li> </ul> <b><u>Arts</u></b> <ul style="list-style-type: none"> <li>• Visual Arts</li> </ul>	13 14 15 16 17 18 19 20 21 22 23 24 25 26 27 28 29 30 31
7	<b><u>Results</u></b>	32-33
8	<b><u>FAQ's</u></b>	34-35

# Introduction





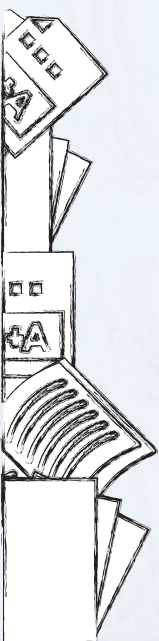


Some students find it hard to move from the MYP to DP because of how rigorous the studying and preparation can get in DP year 1. To guide you through the way and aid you in the process, we have introduced a summer programme which you might find helpful in ensuring a smoother transition between the grades.

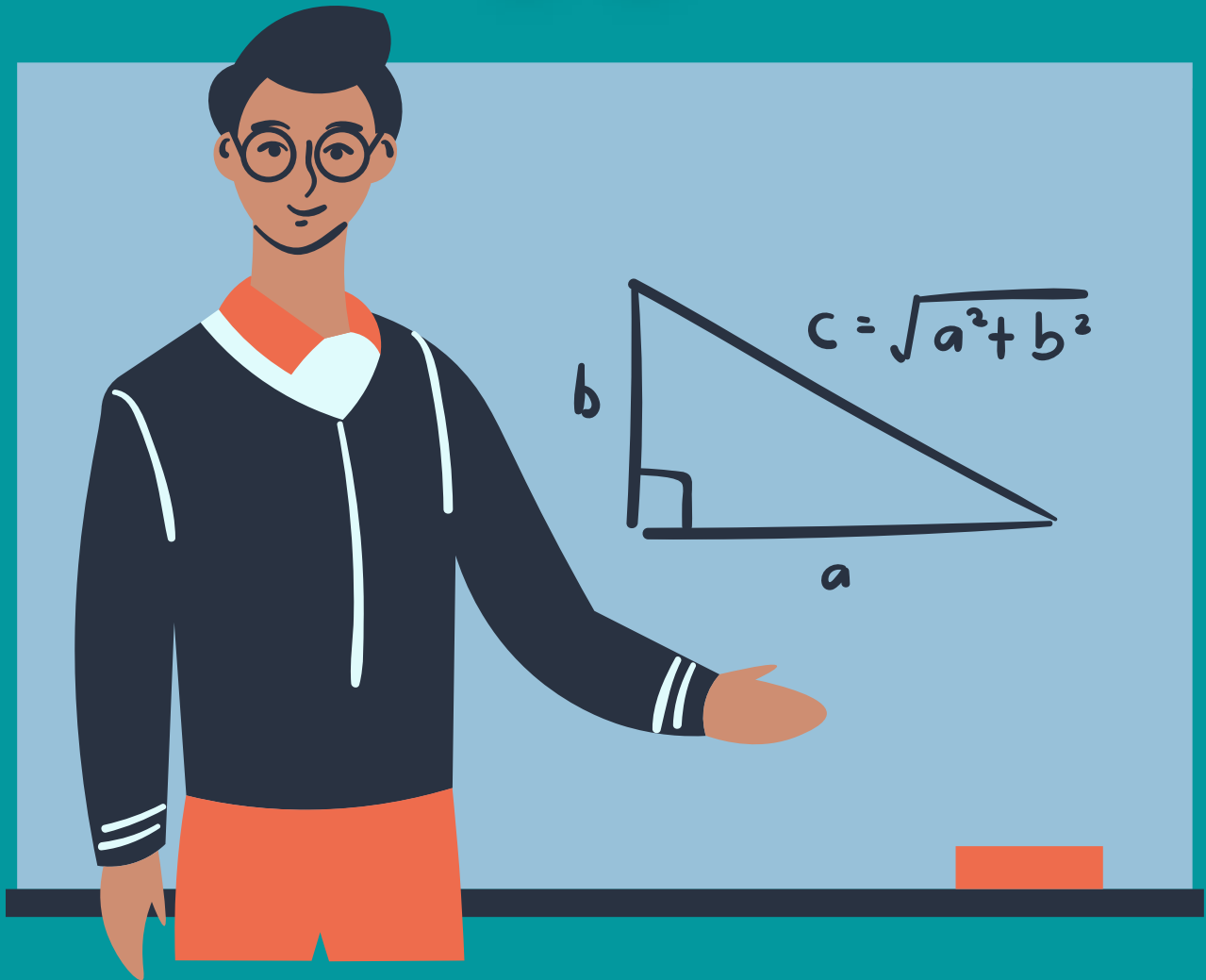
The MYP (Middle Year Programme) curriculum is almost aligned at the same wavelength as DP (Diploma Programme) to ensure a smooth transition for students who continue the IB board. MYP prepares the students by helping them reflect on depth, breadth and balance. This more or less covers the characteristics of the IB program as a whole.

## How will this programme benefit you?

Enrolling in the summer programme would aid the students in getting a brief idea of what the curriculum would be like in DP. Understanding a few concepts in the first unit of the subjects will give the student a headstart in terms of starting their learning journey in the DP Year 1. The summer programme is divided in a way where 25% of the course time is allotted for the MYP Bridge course and 75% of the time for the DP syllabus.



# Our Approach



The summer program offered by Tychr is specially curated for students to 'Bridge the Gap' between the previous grade and the successive grade.

We believe in a Result-oriented methodology and therefore understand and give importance to the dependency of the next academic year on the previous year for the IBDP curriculum.

Our Adaptive teaching methodology addresses the unique needs of each student and ensures a personalized teaching experience.



# Our Proven T.E.S.T Methodology

## THEORETICAL FRAMEWORK

The student participates in lessons from professional IBDP tutors in small batches of 5 students or fewer. They also get access to comprehensive, high-quality study material on almost every topic

## EXPLANATORY VIDEOS

After the student is comfortable with the basics, they begin to watch more explanatory videos to supplement their knowledge.

## STRENGTHENING CONCEPTS

The student then begins practicing with modular assignments to reinforce their skills. One-to-one mentoring sessions help iron out any misconceptions. Tychr also holds brainstorming sessions with faculty and students from different countries to help students plan their Extended Essay and ToK

## TIME BOUND TEST SERIES

Finally, the student moves on to solving question papers in exam-style conditions. They receive checked answer sheets and a comprehensive answer key to each. Tychr also provides performance analysis with real-time rankings for students around the world.



# Timeline



## First 15 days of the program

Strengthening the MYP Curriculum + Solid foundation for DP1



## Next 45 days of the program

Familiarize with the Individual subject IAs, Extended essays and ToKs which are an integral part of the IBDP curriculum.



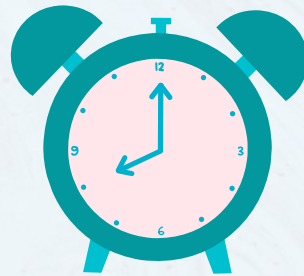
# Course Structure





### **Class frequency**

2 classes per week  
per subject



### **Timings**

Between 4-8 pm( the fixed  
schedule will be shared with the  
student on enrollment



### **Summer Program Duration**

7th june - 7th August  
(2 months)



### **Class Duration**

60 minutes



### **Cost**

24,000 only per subject  
for 2 months



### **Class size**

Upto 4 students

# Our Teachers







**Arpit Bhardwaj**  
Director & Co-Founder



**Taha Firdous Shah**  
University Of Cambridge



**Karandeep**  
St. Stephens College, IIT Delhi



**Archana Kannangath**  
NMIMS, Mumbai



**Tanushi**  
MIT WPU, Pune



**Saurav**  
Delhi University & IIT Madras



# Language & Literature



# English A

## Phase 1: 7<sup>th</sup> June to 25<sup>th</sup> June

- Revising the concepts of the MYP syllabus



## Phase 2: 26<sup>th</sup> June to 7<sup>th</sup> August

### DP Syllabus:

#### Part 1: Language in Cultural Context

- Language and communities (nation/region, subcultures)
- History and evolution of the language (disappearing and revival languages, Creoles)
- Language and power (linguistic imperialism, propaganda)
- Language and social relations (social and professional status, race)



# Individuals & Societies



# Business Management

## Phase 1: 7<sup>th</sup> June to 25<sup>th</sup> June

- Revising the concepts of the MYP syllabus

## Phase 2: 26<sup>th</sup> June to 7<sup>th</sup> August

### DP Syllabus:

#### Unit 1: Business organization and environment

- Introduction to business management
- Types of organizations
- Organizational objectives
- Stakeholders
- External environment
- Growth and evolution





# Economics

## Phase 1: 7<sup>th</sup> June to 25<sup>th</sup> June

- Revising the concepts of the MYP syllabus

## Phase 2: 26<sup>th</sup> June to 7<sup>th</sup> August

### DP Syllabus:

#### Unit 1: Introduction to Economics

- What is Economics?
- How Do Economists Approach the World?

#### Unit 2: Microeconomics

- Demand
- Supply
- Competitive market equilibrium
- Critique of the Maximizing Behavior of Consumers and Producers
- Elasticity of Demand
- Elasticity of Supply



# Psychology

## Phase 1: 7<sup>th</sup> June to 25<sup>th</sup> June

- Revising the concepts of the MYP syllabus

## Phase 2: 26<sup>th</sup> June to 7<sup>th</sup> August

### DP Syllabus:

#### Part 1: Core

- The biological level of analysis
- The brain and behavior
- Hormones and behavior
- Genetics and behavior



# History

## Phase 1: 7<sup>th</sup> June to 25<sup>th</sup> June

- Revising the concepts of the MYP syllabus

## Phase 2: 26<sup>th</sup> June to 7<sup>th</sup> August

- One prescribed subject to be studied





# Global Politics

## Phase 1: 7<sup>th</sup> June to 25<sup>th</sup> June

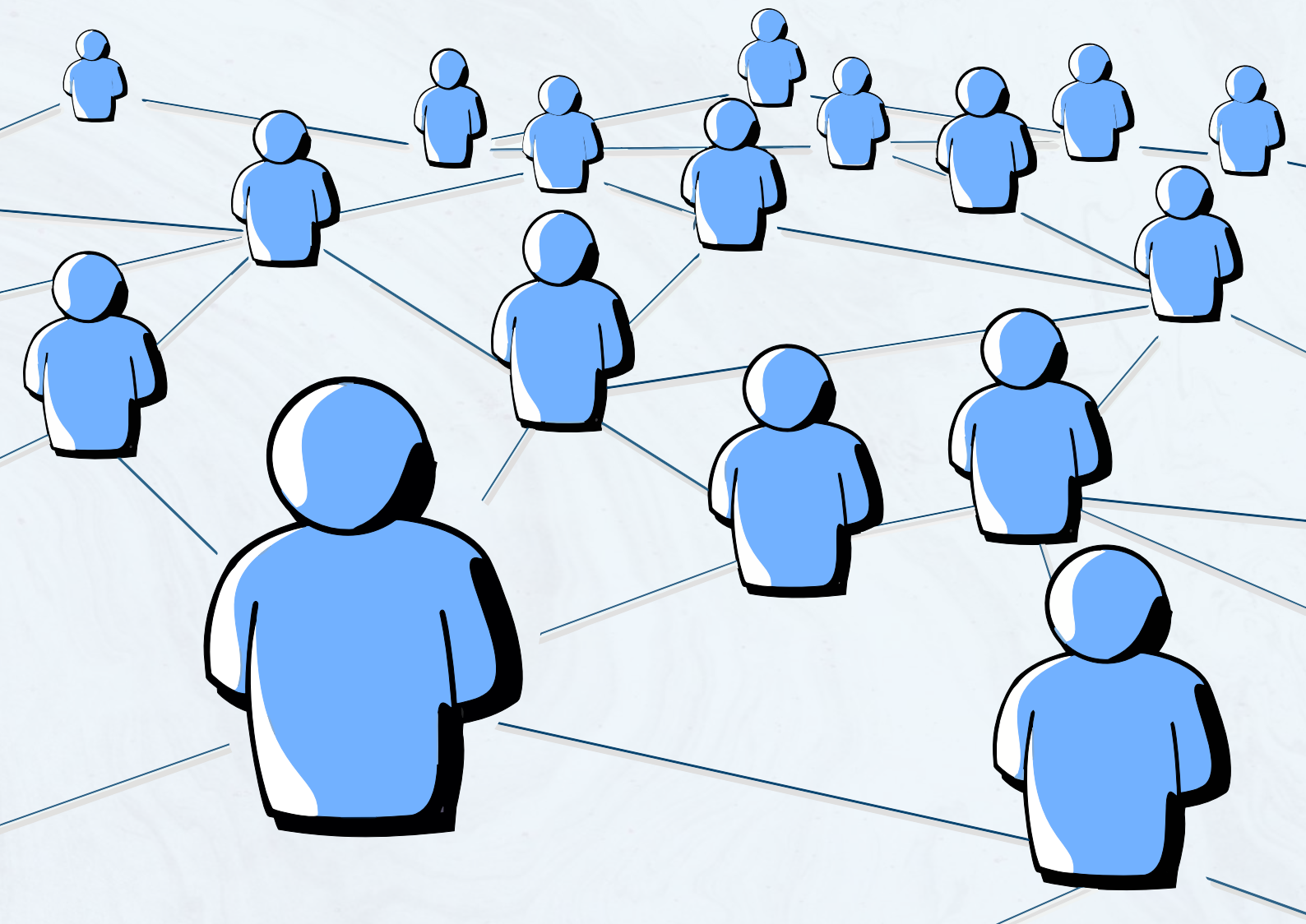
- Revising the concepts of the MYP syllabus

## Phase 2: 26<sup>th</sup> June to 7<sup>th</sup> August

### DP Syllabus:

**Core units: people, power and politics**

- Power, sovereignty and international relations





# Sciences



# Physics

## Phase 1: 7<sup>th</sup> June to 25<sup>th</sup> June

- Revising the concepts of the MYP syllabus

## Phase 2: 26<sup>th</sup> June to 7<sup>th</sup> August

### DP Syllabus:

#### Topic 1: Measurements and Uncertainties

- Measurements in physics
- Uncertainties and errors
- Vectors and scalars

#### Topic 2: Mechanics

- Motion
- Forces





# Chemistry

## Phase 1: 7<sup>th</sup> June to 25<sup>th</sup> June

- Revising the concepts of the MYP syllabus

## Phase 2: 26<sup>th</sup> June to 7<sup>th</sup> August

### DP Syllabus:

#### Topic 1: Stoichiometric relationships

- Introduction to the particulate nature of matter and
- Chemical change
- The mole concept
- Reacting masses and volumes

#### Topic 2: Atomic structure

- The nuclear atom
- Electron configuration



# Biology

## Phase 1: 7<sup>th</sup> June to 25<sup>th</sup> June

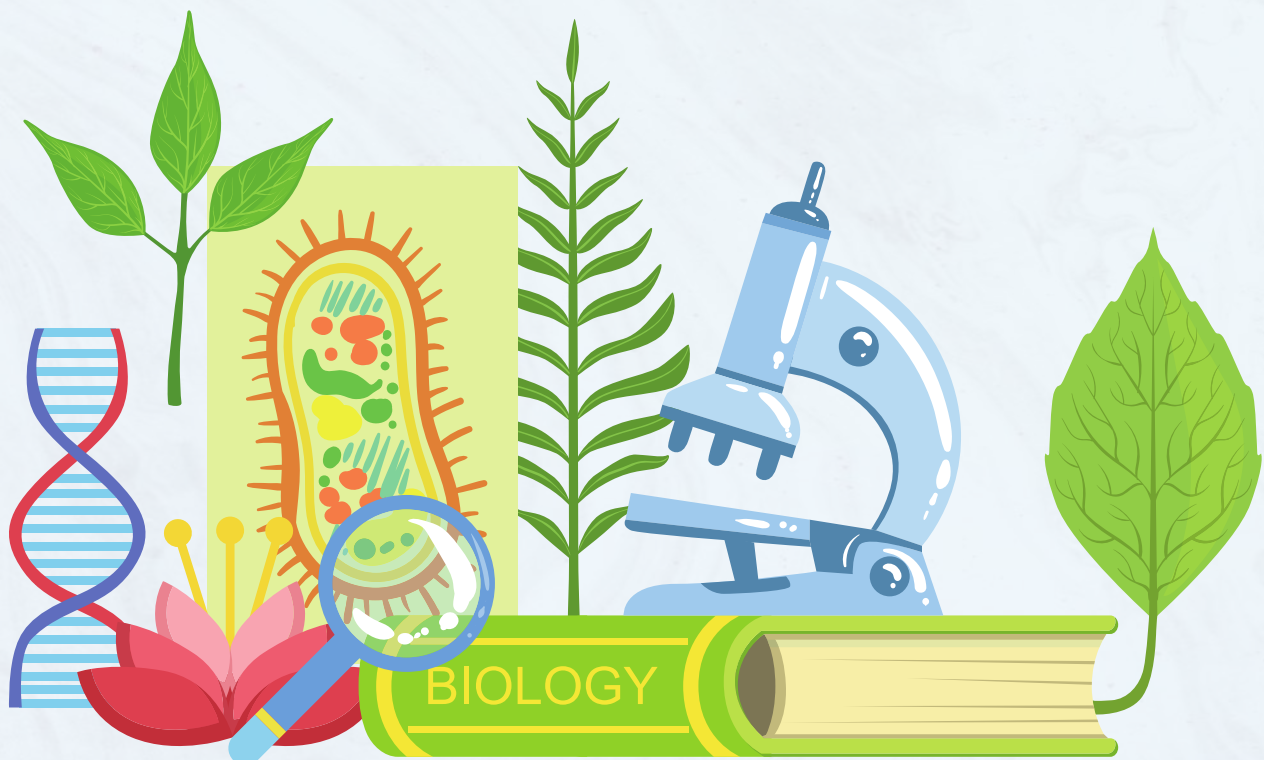
- Revising the concepts of the MYP syllabus

## Phase 2: 26<sup>th</sup> June to 7<sup>th</sup> August

### DP Syllabus:

#### Topic 1: Cell biology

- Introduction to cells
- Ultrastructure of cells
- Membrane structure
- Membrane transport
- The origin of cells
- Cell division





# Environmental Sciences

## Phase 1: 7<sup>th</sup> June to 25<sup>th</sup> June

- Revising the concepts of the MYP syllabus

## Phase 2: 26<sup>th</sup> June to 7<sup>th</sup> August

### DP Syllabus:

#### Topic 1: Foundations of environmental systems and societies

- Environmental value systems
- Systems and models
- Energy and equilibria
- Sustainability
- Humans and pollution



# Computer Science

## Phase 1: 7<sup>th</sup> June to 25<sup>th</sup> June

- Revising the concepts of the MYP syllabus

## Phase 2: 26<sup>th</sup> June to 7<sup>th</sup> August

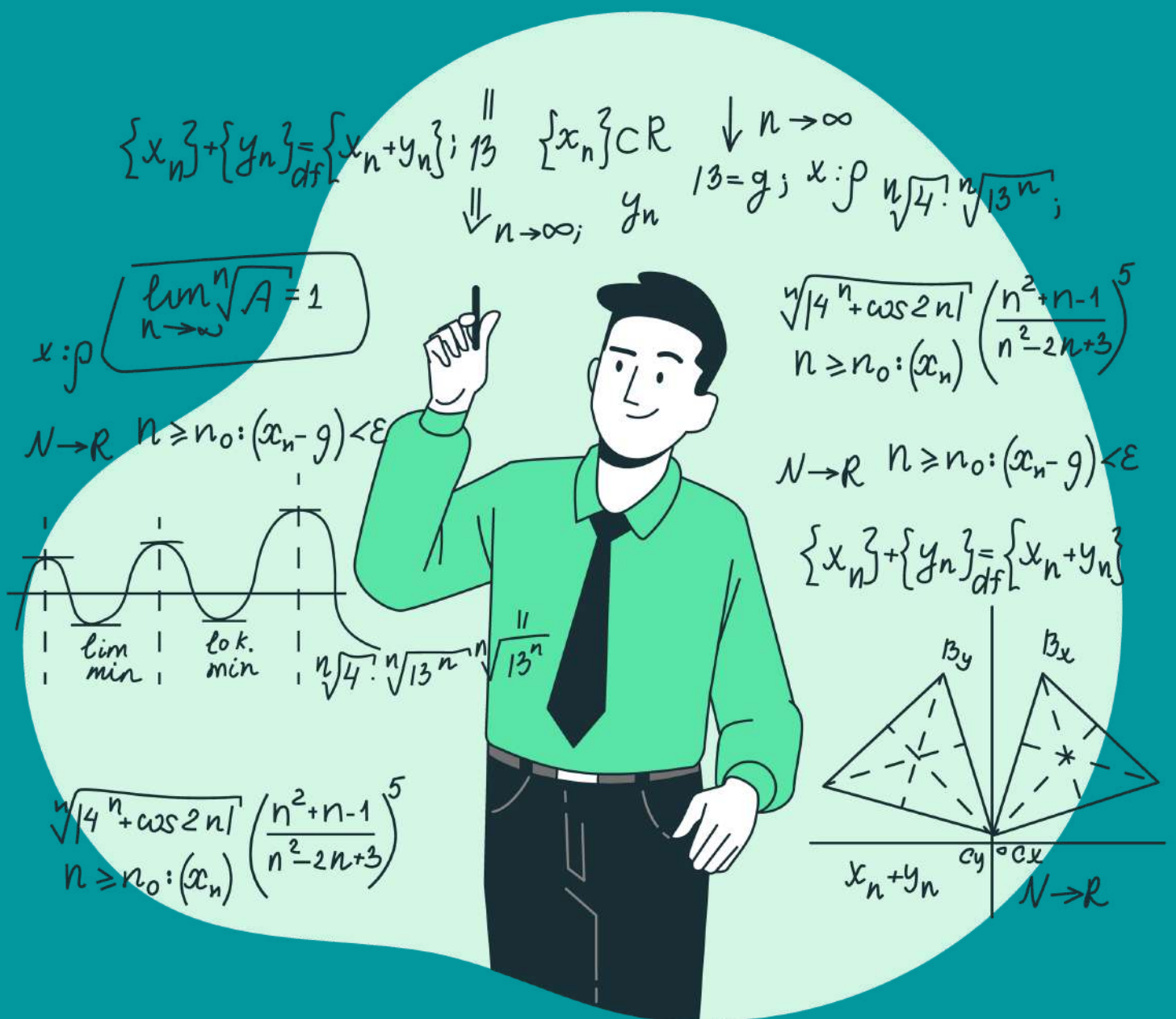
### DP Syllabus:

#### Topic 1: System fundamentals

- Systems in Organization
- System Design Basics



# Mathematics





# Applications and Interpretations

## Phase 1: 7<sup>th</sup> June to 25<sup>th</sup> June

- Revising the concepts of the MYP syllabus

## Phase 2: 26<sup>th</sup> June to 7<sup>th</sup> August

### DP Syllabus:

**Topic 1: Number and Algebra** (some of the subtopics include):

- Evaluating exponential expressions with simple positive exponents
- Evaluating exponential expressions with rational exponents (HL only)
- Use of inequalities,  $<$ ,  $\leq$ ,  $>$ ,  $\geq$ , intervals on the real number line
- Simplification of simple expressions involving roots (surds or radicals)
- Expression of numbers in the form  $a \times 10^k$ ,  $1 \leq a < 10$ ,  $k \in \mathbb{Z}$
- Familiarity with commonly accepted world currencies
- Solution of linear equations and inequalities  
Solution of quadratic equations and inequalities with rational coefficients
- Solving systems of linear equations in two variables

# Analysis and Approaches

## Phase 1: 7<sup>th</sup> June to 25<sup>th</sup> June

- Revising the concepts of the MYP syllabus

## Phase 2: 26<sup>th</sup> June to 7<sup>th</sup> August

### DP Syllabus:

**Topic 1: Number and Algebra (some of the subtopics include):**

- Evaluating exponential expressions with simple positive exponents
- Evaluating exponential expressions with rational exponents (HL only)
- Use of inequalities,  $<$ ,  $\leq$ ,  $>$ ,  $\geq$ , intervals on the real number line
- Simplification of simple expressions involving roots (surds or radicals)
- Expression of numbers in the form  $a \times 10^k$ ,  $1 \leq a < 10$ ,  $k \in \mathbb{Z}$
- Familiarity with commonly accepted world currencies
- Solution of linear equations and inequalities  
Solution of quadratic equations and inequalities with rational coefficients
- Solving systems of linear equations in two variables



# Arts





# Visual Arts

## Phase 1: 7<sup>th</sup> June to 25<sup>th</sup> June

- Revising the concepts of the MYP syllabus

## Phase 2: 26<sup>th</sup> June to 7<sup>th</sup> August

### DP Syllabus:

#### Task 1: Visual Arts in Context

- Examine and compare the work of artists from different cultural contexts.
- Consider the contexts influencing their own work and the work of others.
- Make art through a process of investigation, thinking critically and experimenting with techniques.
- Apply identified techniques to their own developing work.
- Develop an informed response to work and exhibitions they have seen and experienced.
- Begin to formulate personal intentions for creating and displaying their own artworks.



# Results





**RUSHIL**

Podar International School, Mumbai  
Georgia Institute of Technology, US

**SAT Score - 1550/1600**

**IBDP Score - 45/45**

Year - 2019



**ESHAAN**

(Pathways World School, Aravali)

**IBDP Score - 42/45**

Year - 2021



**APOORVA**

(Pathways World School, Aravali)

**MYP Score - 50/56**

Year - 2021



**ANIKET**

(Pathways World School, Aravali)

**IBDP Score - 38/45**

Year - 2020



**KRITI**

(Pathways World School, Aravali)

**IBDP Score - 38/45**

Year - 2021



**KARTIK**

(Pathways World School, Aravali)

**IBDP Score - 41/45**

Year - 2021



# FAQ's



### **1) Do we get a trial class?**

One trial class can be availed for any one subject of your choice.

### **2) What if the student misses a lecture?**

A recorded lecture will be provided to the student to ensure that he/she don't miss out on their studies.

### **3) What material will the student receive?**

The student will receive subject specific material in the form of notes, assignments and tests

### **4) Is the fee refundable?**

The fee is non-refundable under any circumstances.





INR 24,000 / US \$350  
only per subject for  
2 Months



[www.tychr.com](http://www.tychr.com)



+91 9540653900