

# The IB DP1-DP2 Bridge Course



# Contents

S.No	Topics	Page No.
1	<u>Introduction</u>	3-4
2	<u>Our Approach</u>	5
3	<u>Our proven T.E.S.T Methodology.</u>	6
4	<u>Timeline</u>	7-8
5	<u>Course structure</u>	9-10
6	<u>Our teachers</u>	11-12
7	<u>DP 1 Checklist</u>	13-14
8	<u>DP 2 Checklist</u>	15-21
9	<b><u>Subjects</u></b> <b><u>Language &amp; Literature</u></b> <ul style="list-style-type: none"> <li>English A</li> </ul> <b><u>Individuals &amp; Societies</u></b> <ul style="list-style-type: none"> <li>Business Management</li> <li>Economics</li> <li>Psychology</li> <li>History</li> <li>Geography</li> </ul> <b><u>Sciences</u></b> <ul style="list-style-type: none"> <li>Physics</li> <li>Chemistry</li> <li>Biology</li> <li>Environmental Sciences</li> <li>Computer Sciences</li> </ul> <b><u>Mathematics</u></b> <ul style="list-style-type: none"> <li>Applications and Interpretations</li> <li>Analysis and Approach</li> </ul> <b><u>Arts</u></b> <ul style="list-style-type: none"> <li>Visual Arts</li> </ul>	22 23 24 25 26 27 28 29 30 31 32 33 34 35 36 37 38 39 40
10	<u>Results</u>	41-42
11	<u>FAQ's</u>	43-44

# Introduction







The IBDP aims to develop students who have excellent breadth and depth of knowledge – students who flourish physically, intellectually, emotionally and ethically. The Diploma Programme (DP) curriculum is made up of six subject groups and the DP core, comprises theory of knowledge (TOK), creativity, activity, service (CAS) and the extended essay. Through the Diploma Programme (DP) core, students reflect on the nature of knowledge, complete independent research and undertake a project that often involves community service.

## Why should you enroll in the IB DP1-DP2 Bridge Course?

The IB curriculum consists of two years, DP1 and DP2. The transition from DP1 to DP2 might seem taxing as your workload, assignments and exams start to pile up. To guide you through the process, we have introduced a summer programme that you might find helpful in ensuring a smoother transition between DP1 and DP2.

Enrolling in the summer programme would aid the students in getting an idea of what DP2 would entail, revise DP1 content for each subject, get you accustomed to IB-style questions and help you check off all things on your list.



**REGISTRATION**



# Our Approach



The summer program offered by Tychr is specially curated for students to 'Bridge the Gap' between the previous grade and the successive grade.

We believe in a Result-oriented methodology and therefore understand and give importance to the dependency of the next academic year on the previous year for the IBDP curriculum.

Our Adaptive teaching methodology addresses the unique needs of each student and ensures a personalized teaching experience.

# Our Proven T.E.S.T Methodology

## THEORETICAL FRAMEWORK

The student participates in lessons from professional IBDP tutors in small batches of 5 students or fewer. They also get access to comprehensive, high-quality study material on almost every topic

## EXPLANATORY VIDEOS

After the student is comfortable with the basics, they begin to watch more explanatory videos to supplement their knowledge.

## STRENGTHENING CONCEPTS

The student then begins practicing with modular assignments to reinforce their skills. One-to-one mentoring sessions help iron out any misconceptions. Tychr also holds brainstorming sessions with faculty and students from different countries to help students plan their Extended Essay and ToK

## TIME BOUND TEST SERIES

Finally, the student moves on to solving question papers in exam-style conditions. They receive checked answer sheets and a comprehensive answer key to each. Tychr also provides performance analysis with real-time rankings for students around the world.



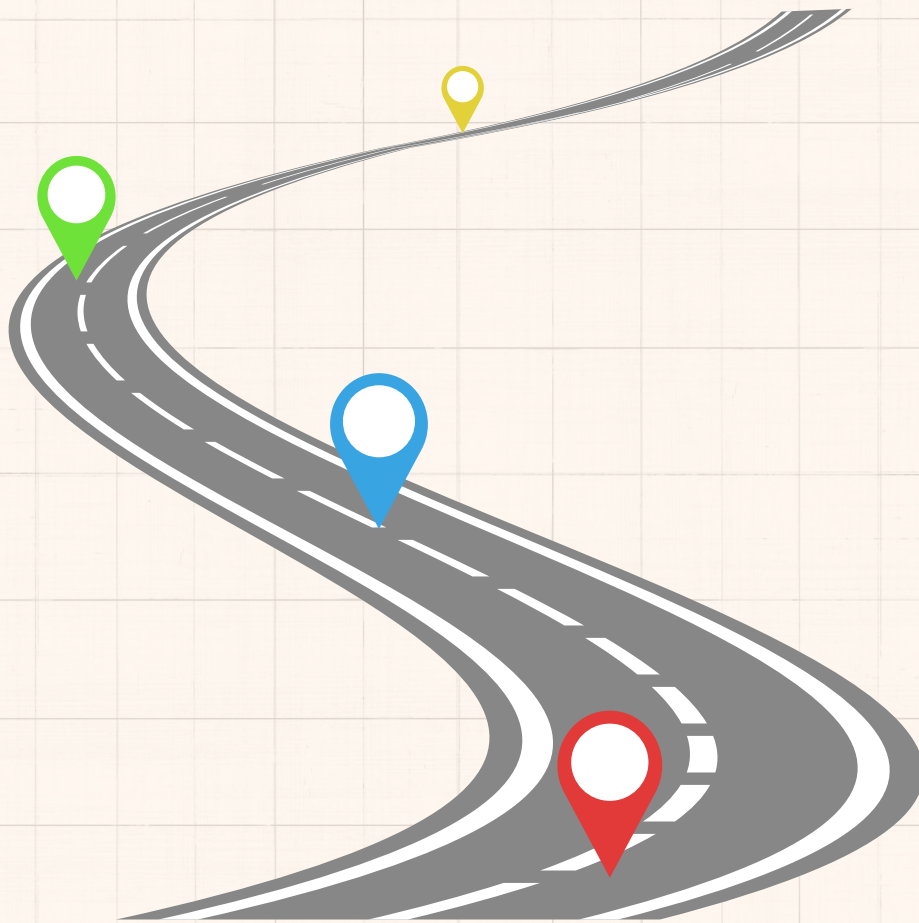


# Timeline



## First 15 days of the program

Covering the Major high scoring areas  
Familiarize with the Individual subjects  
IAs, Extended essays and ToKs which are  
an integral part of the IBDP curriculum

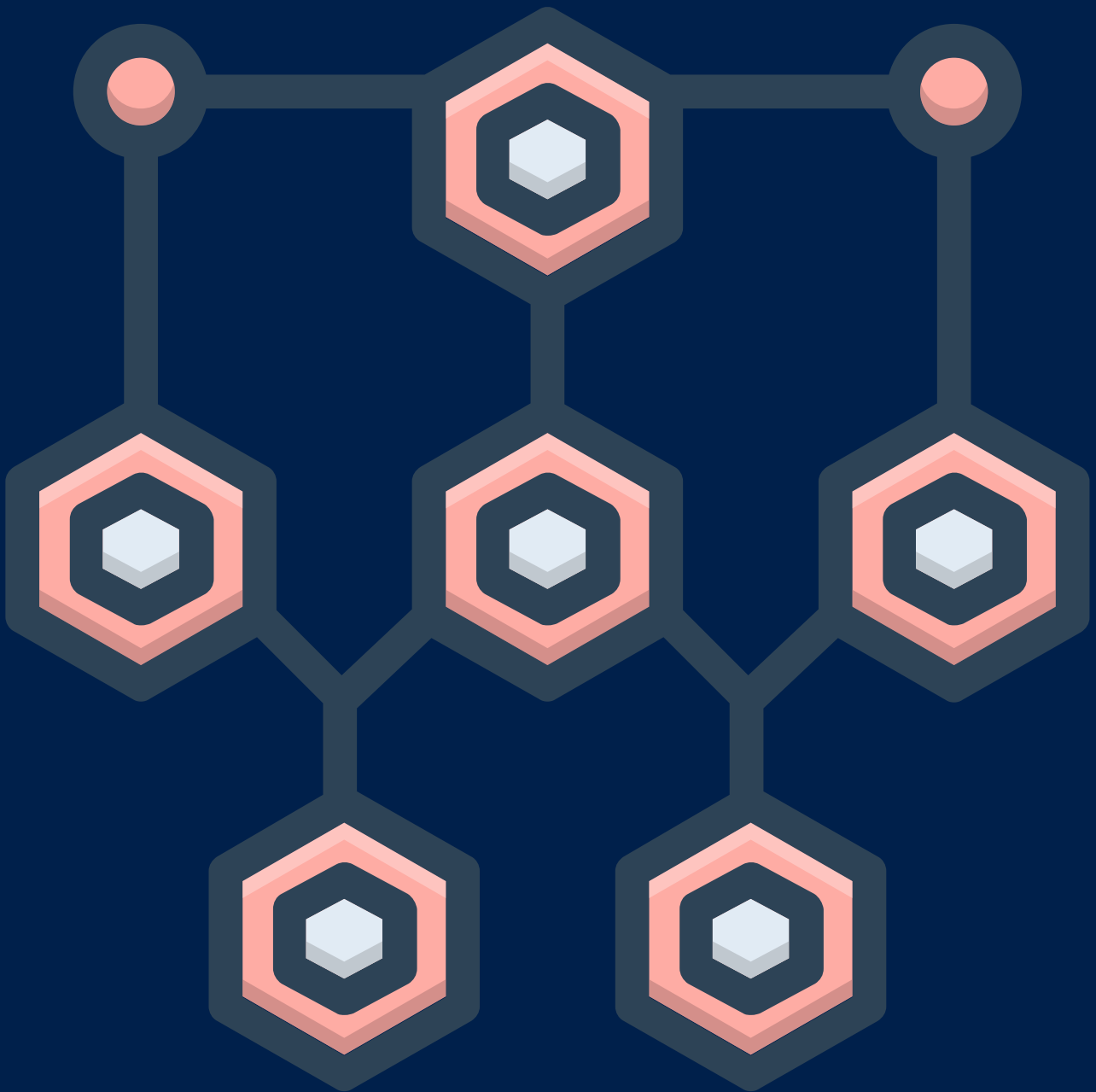


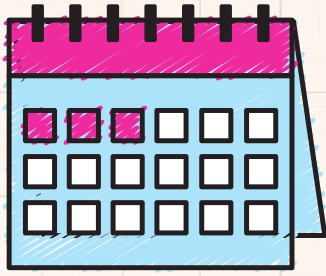
## Next 45 days of the program

Guiding the students with  
the individual subjects IAs,  
Extended essays and ToKs  
which are an integral part  
of the IBDP curriculum.



# Course Structure





### **Class frequency**

2 classes per week  
per subject



### **Timings**

Between 4-8 pm( the fixed  
schedule will be shared with the  
student on enrollment



### **Summer Program Duration**

7th june - 7th August  
(2 months)



### **Class Duration**

60 minutes



### **Cost**

24,000 only per subject  
for 2 months



### **Class size**

Upto 4 students



# Our Teachers





**Arpit Bhardwaj**  
Director & Co-Founder



**Taha Firdous Shah**  
University Of Cambridge



**Karandeep**  
St. Stephens College, IIT Delhi



**Archana Kannangath**  
NMIMS, Mumbai



**Tanushi**  
MIT WPU, Pune



**Saurav**  
Delhi University & IIT Madras



# DP 1 Checklist



# DP 1 Checklist

By now, you should have completed the following in DP1:

- The first/second draft of your Internal Assessments for each subject
- TOK Exhibition
- Long-term CAS project
- CAS activities (2/3rd)
- Halfway through the syllabus of all subjects
- EE topic/ideas



# DP 2 Checklist





# DP 2 Checklist

Moving forward, DP2 will mainly focus on:

## Extended Essay

The extended essay is a mandatory core component of the IB Diploma Programme that ends with a 4000-word essay. It contributes to the 3 extra points apart from the cumulative subject score for the 6 chosen subjects.

- Choose an interesting subject area and pick a topic
- Before beginning to write the essay, read through the extended essay guidelines
- Plan the extended essay thoroughly and begin
- Note down all of your references
- Reflection is important
- Validation and collection of method and data



# TOK Essay

ToK is externally assessed based on a 1200 to 1600 word essay on a prescribed title.

- Understand the Prescribed Titles
- Choose Your Title Carefully
- Understand the Grading Criteria
- Read the Essay's Instructions Carefully
- Brainstorming Ideas around the Title of the Essay
- Identify the Knowledge Issue in the Essay Title
- Create Your TOK Essay Outline
- Craft a Thesis Statement





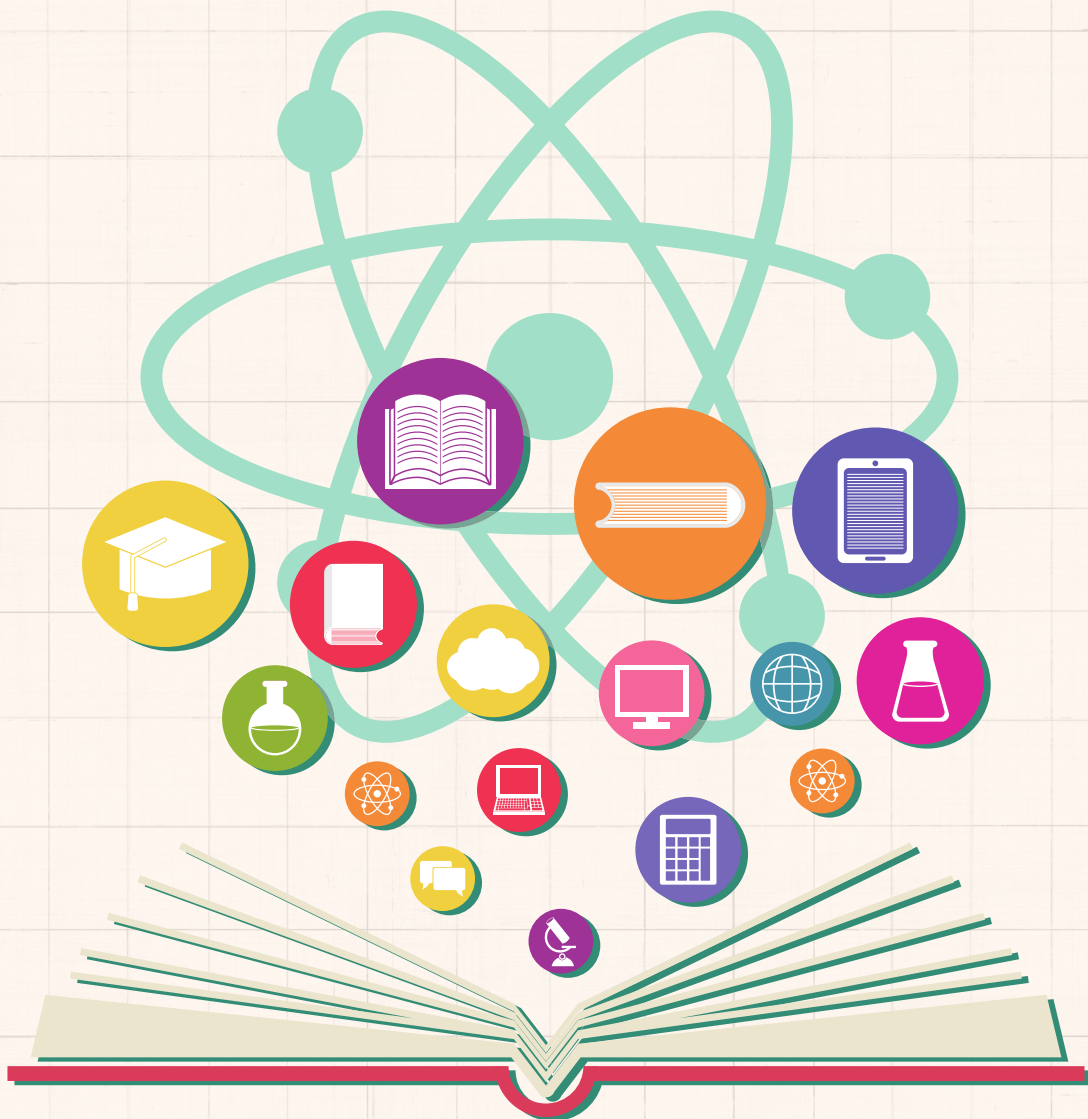
# Examples of CAS





# Creativity

- Learning a new musical instrument
- Learning a new language using Duolingo for instance
- Learning a new art medium
- Teaching your interests online as a free workshop
- Learning to cook or bake
- Starting clubs in something that interests you
- Taking up photography
- Write short stories
- Start a youtube channel



# Activity

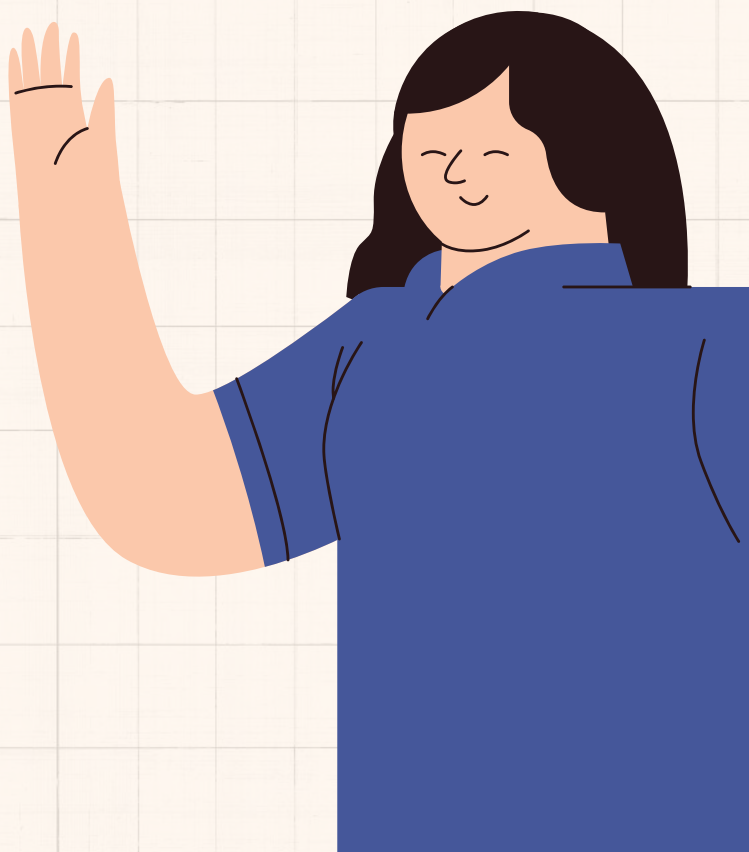
- Start a workout routine - take up Zumba classes or join the gym
- Go on a yoga retreat
- Take up a sport; anything from archery to badminton
- Try skateboarding
- Go on a hike on an early morning with your pet doggo
- Participate in a swimming competition - doesn't matter if you win or lose!
- Go on a marathon for a cause! (counts as a service too)





# Service

- Volunteer at a charity
- Volunteer at a local government
- Volunteer at a local hospital
- Organize a bake sale
- Be a part of a food stall
- Organize fundraisers
- Volunteer at an animal shelter
- Do campaigns on worldwide issues
- Volunteer at a nursing home





# Language & Literature



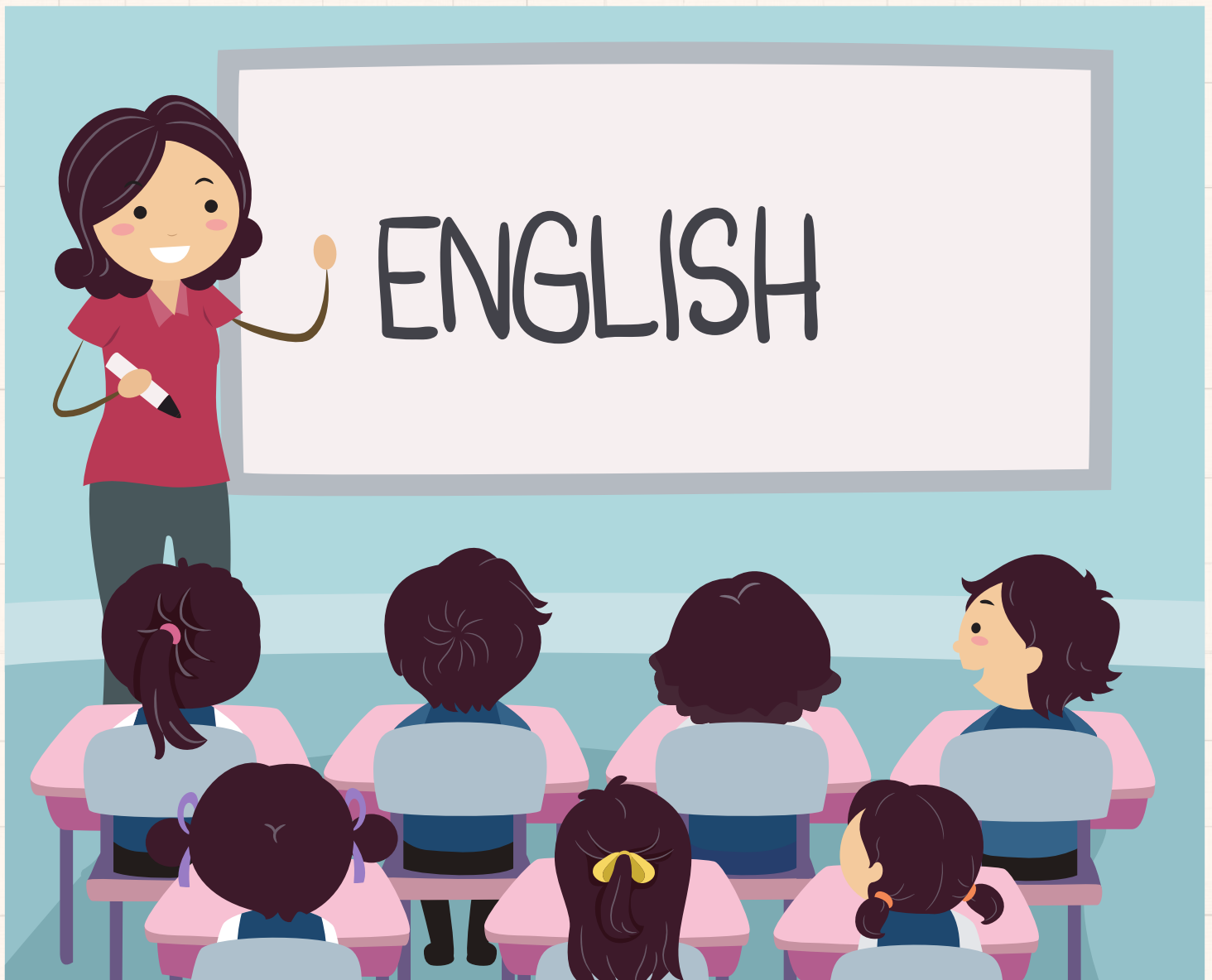
# English A

## Phase 1: 7<sup>th</sup> June to 25<sup>th</sup> June

- Identity
- Culture
- Creativity

## Phase 2: 26<sup>th</sup> June to 7<sup>th</sup> August

- Paper 1 IB-style questions



# Individuals & Societies





# Business Management

## Phase 1: 7<sup>th</sup> June to 25<sup>th</sup> June

- Unit 1: Introduction to Business Management
- Unit 2: Human resource management

## Phase 2: 26<sup>th</sup> June to 7<sup>th</sup> August

- Unit 3: Finance and Accounts
- Practising IB-style questions



# Economics

## Phase 1: 7<sup>th</sup> June to 25<sup>th</sup> June

### Microeconomics

- Demand
- Supply
- Competitive Market Equilibrium
- Critique of the Maximizing Behaviour of Consumers and Producers
- Elasticity of Demand
- Elasticity of Supply
- Role of Government in Microeconomics
- Market Failure--Externalities and Common Pool or Common Access Failures
- Market Failure--Public Goods

## Phase 2: 26<sup>th</sup> June to 7<sup>th</sup> August

- (HL ONLY) Market Failure--Asymmetric Information
- (HL ONLY) Market Failure--Market Power
- (HL ONLY) The Market's Inability to Achieve Equality
- Practising IB-style questions





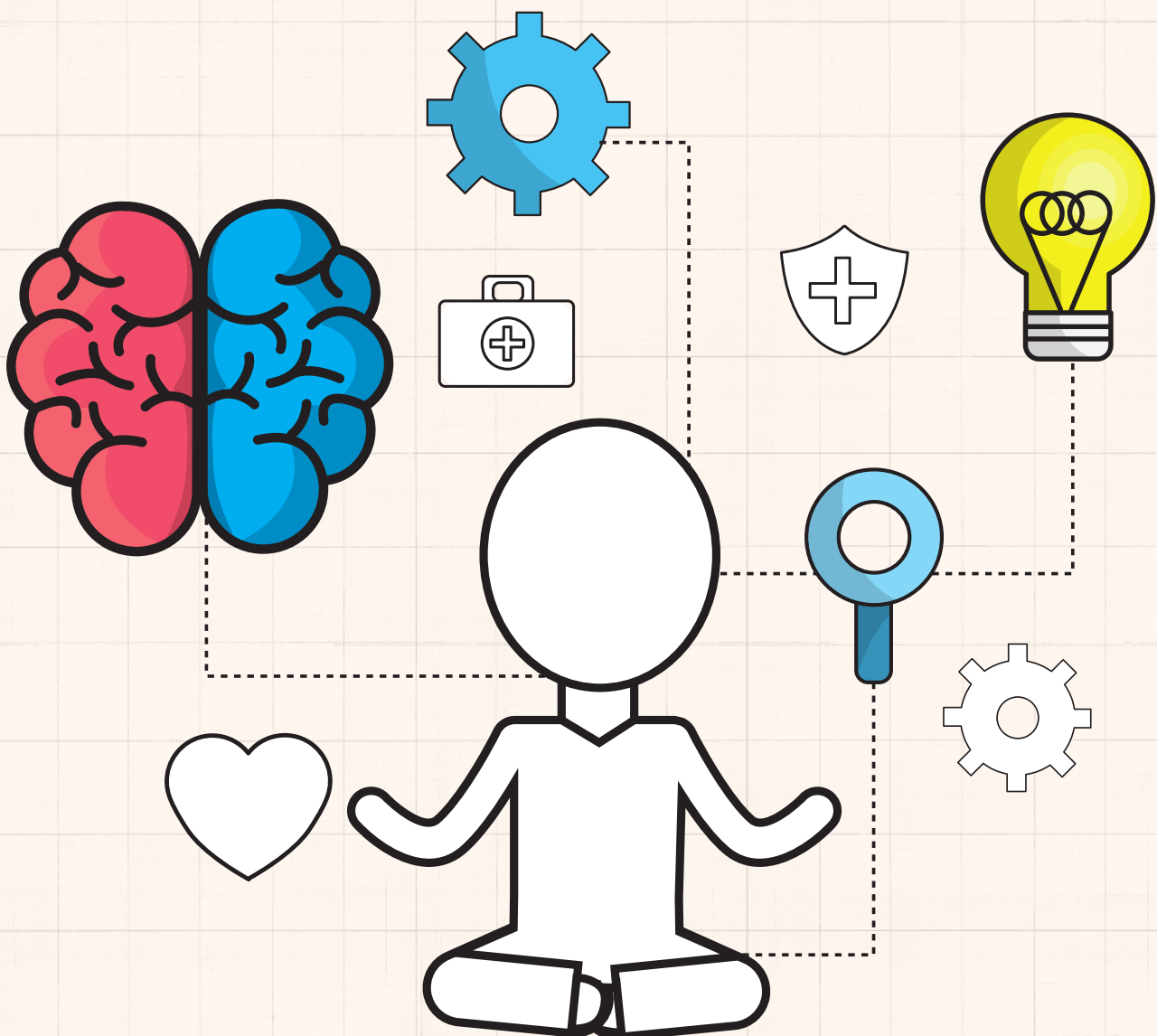
# Psychology

## Phase 1: 7<sup>th</sup> June to 25<sup>th</sup> June

- Biological approach to understanding behaviour
- Cognitive approach to understanding behaviour
- Sociocultural approach to understanding behaviour

## Phase 2: 26<sup>th</sup> June to 7<sup>th</sup> August

- Approaches to researching behaviour
- Practising IB-style questions





# History

## Phase 1: 7<sup>th</sup> June to 25<sup>th</sup> June

- Military leaders
- Conquest and its impact

## Phase 2: 26<sup>th</sup> June to 7<sup>th</sup> August

- The move to global war
- Practising IB-style questions



# Geography

## Phase 1: 7<sup>th</sup> June to 25<sup>th</sup> June

### SL and HL Core

- Population distribution: changing population
- Global Climate: vulnerability and resilience

## Phase 2: 26<sup>th</sup> June to 7<sup>th</sup> August

- Global resource consumption and security
- Practising IB-style questions





# Sciences





# Physics

## Phase 1: 7<sup>th</sup> June to 25<sup>th</sup> June

- Mechanics
- Thermal Physics
- Waves

## Phase 2: 26<sup>th</sup> June to 7<sup>th</sup> August

- Electricity and Magnetism
- Practising IB-style questions







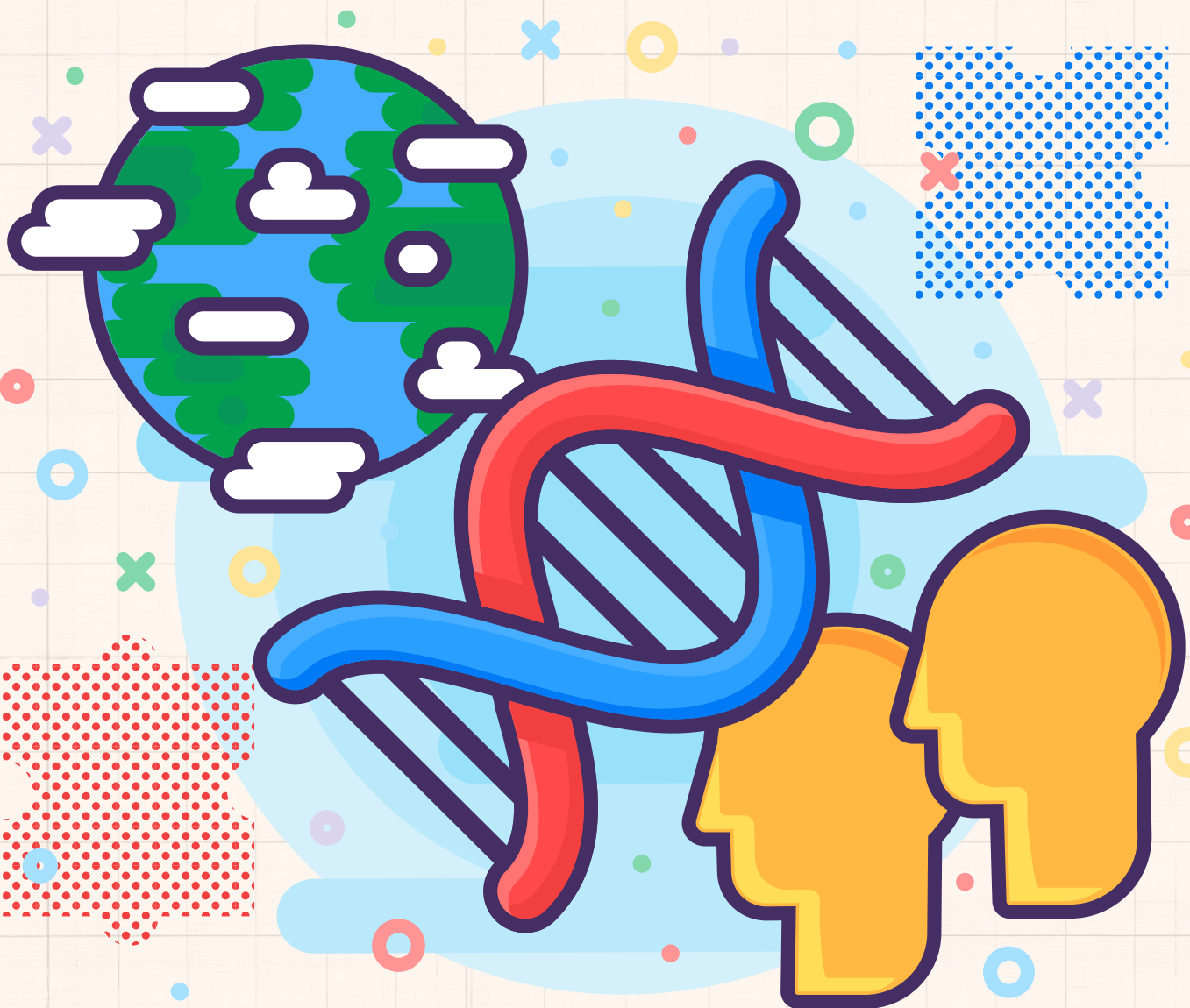
# Biology

## Phase 1: 7<sup>th</sup> June to 25<sup>th</sup> June

- Molecular Biology
- Genetics
- Ecology

## Phase 2: 26<sup>th</sup> June to 7<sup>th</sup> August

- Evolution and Biodiversity
- Practising IB-style questions





# ESS

## Phase 1: 7<sup>th</sup> June to 25<sup>th</sup> June

- Foundations of ESS
- Ecosystems and Ecology
- Biodiversity and Conservation

## Phase 2: 26<sup>th</sup> June to 7<sup>th</sup> August

- Aquatic Systems
- Practising IB-style questions



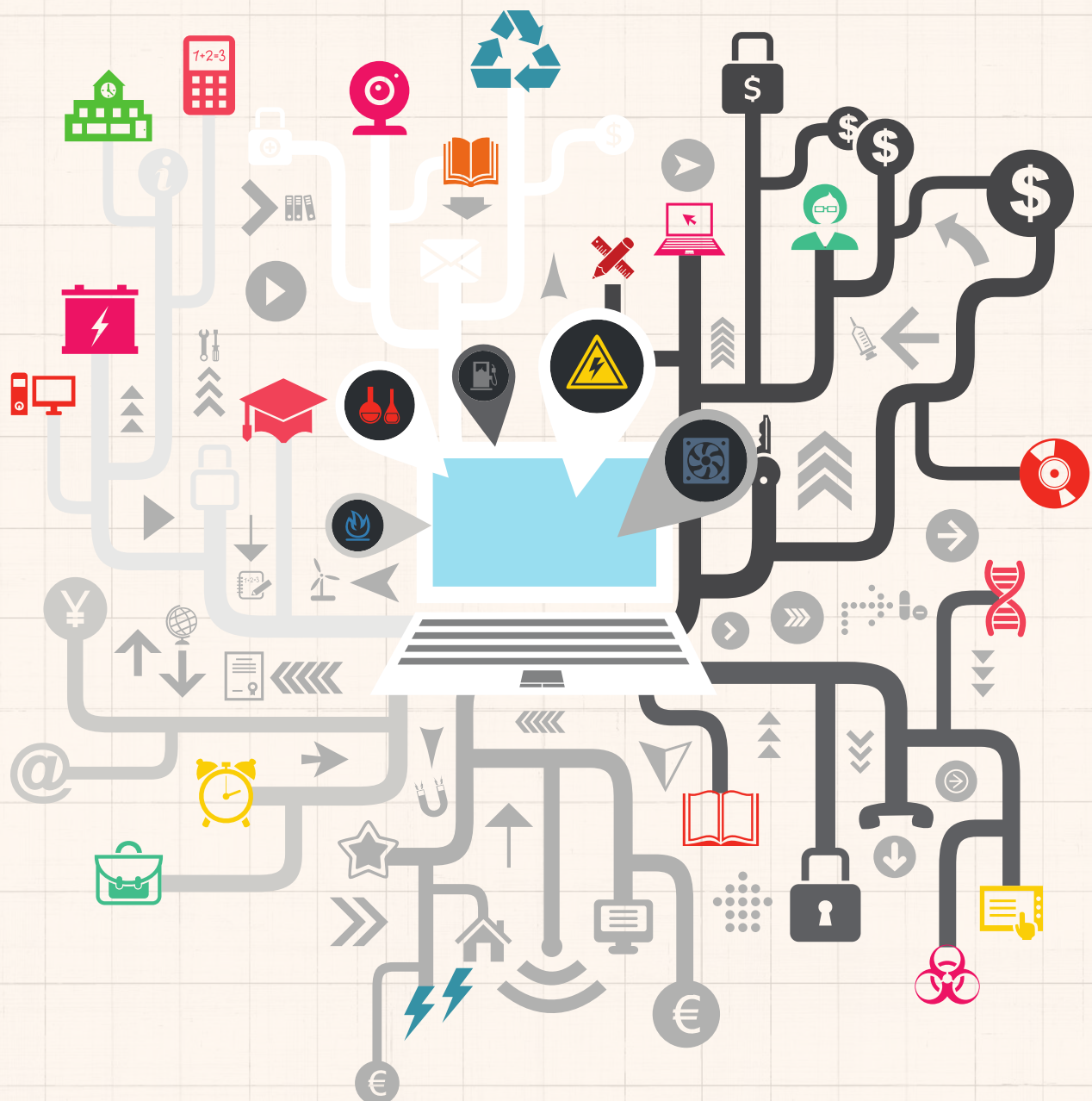
# Computer Science

## Phase 1: 7<sup>th</sup> June to 25<sup>th</sup> June

- System fundamentals
- Computer organization

## Phase 2: 26<sup>th</sup> June to 7<sup>th</sup> August

- Networks
- Practising IB-style questions



# Mathematics





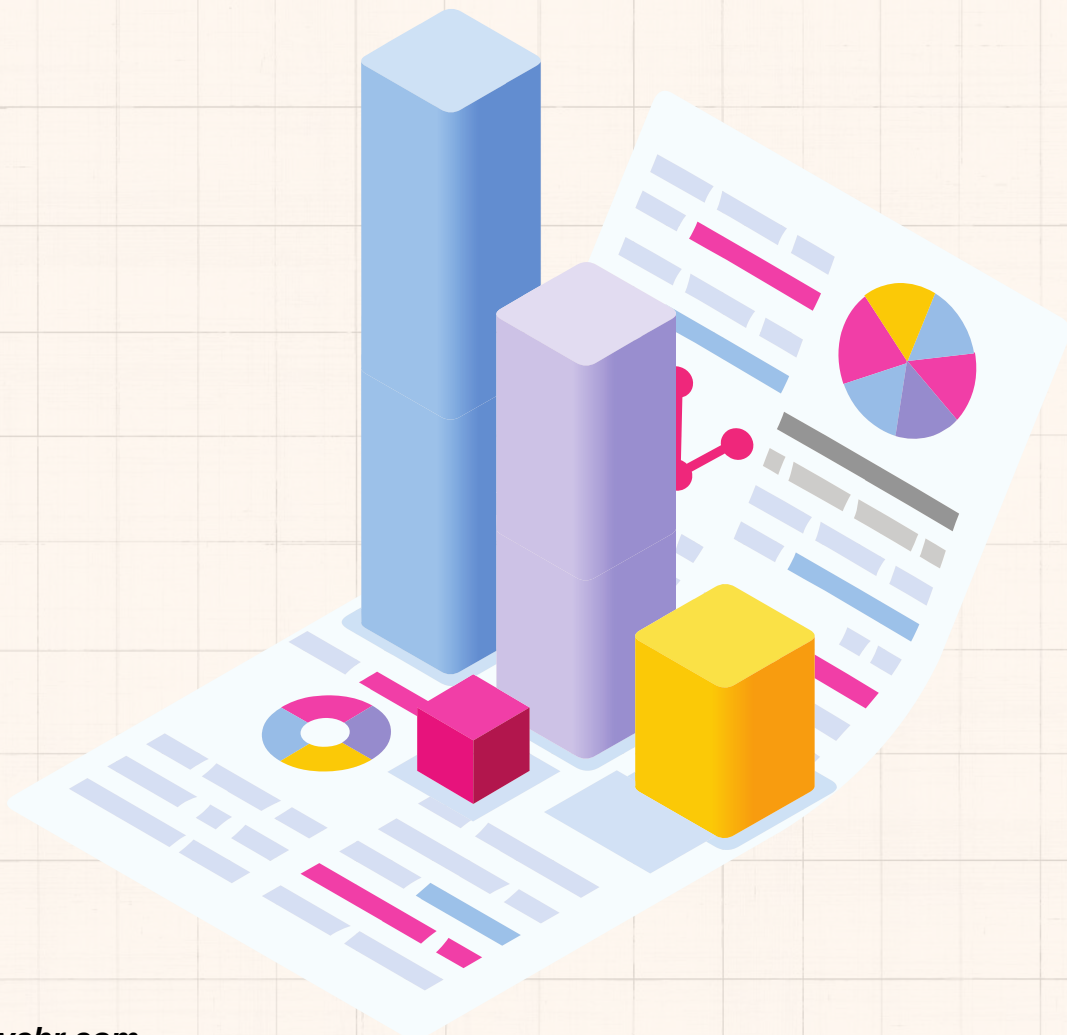
# Mathematics Applications & Interpretation

## Phase 1: 7<sup>th</sup> June to 25<sup>th</sup> June

- Number and Algebra
- Functions

## Phase 2: 26<sup>th</sup> June to 7<sup>th</sup> August

- Statistics and Probability
- Practising IB-style questions



# Mathematics Analysis and Approaches

## Phase 1: 7<sup>th</sup> June to 25<sup>th</sup> June

- Number and Algebra
- Functions

## Phase 2: 26<sup>th</sup> June to 7<sup>th</sup> August

- Number and Algebra
- Functions





# Visual Arts





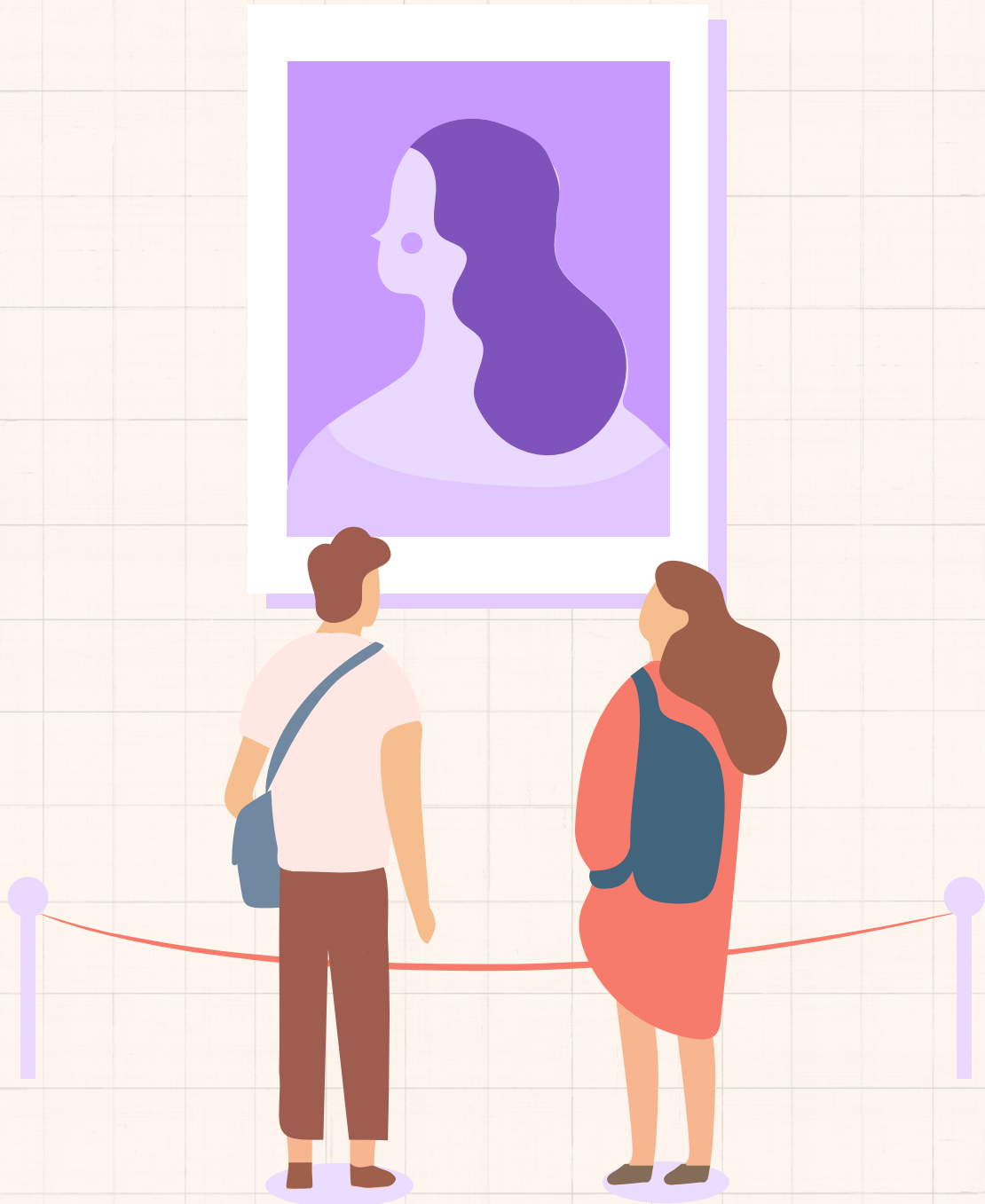
# Visual Arts

## Phase 1: 7<sup>th</sup> June to 25<sup>th</sup> June

- Comparative study

## Phase 2: 26<sup>th</sup> June to 7<sup>th</sup> August

- Exhibition pieces
- Intro to Process portfolio



# Results





**RUSHIL**

Podar International School, Mumbai  
Georgia Institute of Technology, US

**SAT Score - 1550/1600**

**IBDP Score - 45/45**

Year - 2019



**ESHAAN**

(Pathways World School, Aravali)

**IBDP Score - 42/45**

Year - 2021



**APOORVA**

(Pathways World School, Aravali)

**MYP Score - 50/56**

Year - 2021



**ANIKET**

(Pathways World School, Aravali)

**IBDP Score - 38/45**

Year - 2020



**KRITI**

(Pathways World School, Aravali)

**IBDP Score - 38/45**

Year - 2021



**KARTIK**

(Pathways World School, Aravali)

**IBDP Score - 41/45**

Year - 2021



# FAQ's



### **1) Do we get a trial class?**

One trial class can be availed for any one subject of your choice.

### **2) What if the student misses a lecture?**

A recorded lecture will be provided to the student to ensure that he/she don't miss out on their studies.

### **3) What material will the student receive?**

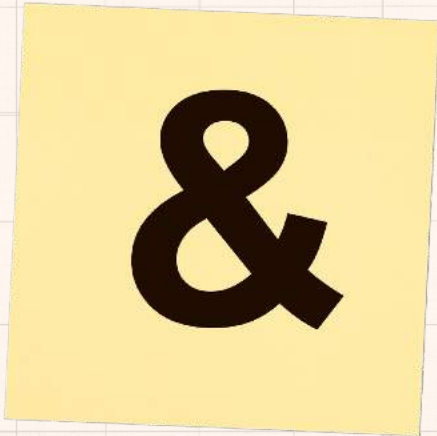
The student will receive subject specific material in the form of notes, assignments and tests

### **4) Is the fee refundable?**

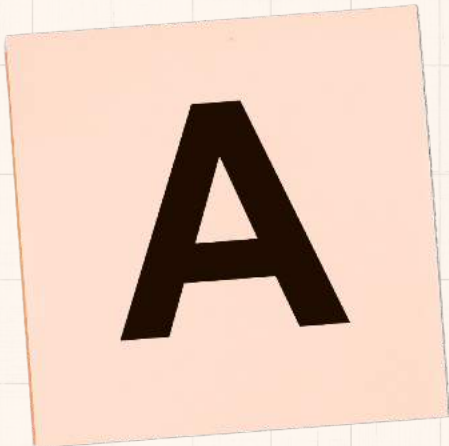
The fee is non-refundable under any circumstances.



**Q**



**&**



**A**



**INR 24,000 / US \$350  
only per subject for  
2 Months**



[www.tychr.com](http://www.tychr.com)



**+91 9540653900**